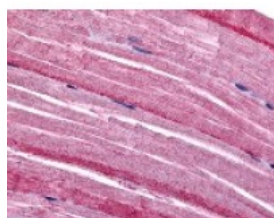




GRK5 Antibody

CATALOG NUMBER: 48-222



Immunohistochemistry staining of GRK5 in myocytes tissue using GRK5 Antibody.

Specifications

SPECIES REACTIVITY:	Human
TESTED APPLICATIONS:	IHC
APPLICATIONS:	GRK5 antibody can be used in ELISA, Western Blot, and immunohistochemistry starting at 1:100.
USER NOTE:	Optimal dilutions for each application to be determined by the researcher.
SPECIFICITY:	BLAST analysis of the peptide immunogen showed no homology with other human proteins, except GRK1 (47%).
IMMUNOGEN:	GRK5 antibody was raised against a peptide located in the N-Terminal region of GRK5 (Human).
HOST SPECIES:	Rabbit

Properties

PURIFICATION:	Immunoaffinity Chromatography
PHYSICAL STATE:	Liquid
BUFFER:	PBS, 0.1% sodium azide.
STORAGE CONDITIONS:	GRK5 antibody should be stored long term (months) at -80 °C and short term (days) at 4 °C. As with all antibodies avoid freeze/thaw cycles.
CLONALITY:	Polyclonal
CONJUGATE:	Unconjugated

Additional Info

ALTERNATE NAMES:	GRK5, FP2025, GPRK5
ACCESSION NO.:	P34947
PROTEIN GI NO.:	462203
OFFICIAL SYMBOL:	GRK5
GENE ID:	2869

Background

