

Name:CD2 mouse monoclonal antibody,clone 1D4
Product Data Sheet - TRUEMAB**Catalog: TA800674**

| | |
|---------------------------------|---|
| Components: | <ul style="list-style-type: none">• CD2 mouse monoclonal antibody,clone 1D4 (TA800674)• 1 vial of 20ug myc-DDK tagged CD2 HEK293T over-expression lysate lyophilized in RIPA buffer (LC400671). (Reconstitute into 20ul of 1x SDS sample buffer before loading; load 5ul per lane as WB control or as desired) |
| Amount: | 100ul |
| Immunogen: | Full length human recombinant protein of human CD2 (NP_001758) produced in HEK293T cell. |
| Host: | Mouse |
| Isotype: | IgG1 |
| Species Reactivity: | Human |
| Guaranteed Applications: | WB |
| Suggested Dilutions: | WB 1:2000, |
| Concentration: | 1.00 mg/ml |
| Buffer: | PBS (PH 7.3) containing 1% BSA, 50% glycerol and 0.02% sodium azide. |
| Purification: | Purified from mouse ascites fluids by affinity chromatography |
| Storage Condition: | Shipped at -20C. Upon delivery store at -20C. Dilute in PBS (pH7.3) if necessary. Stable for 12 months from date of receipt. Avoid repeated freeze-thaws. |

Target

| | |
|--------------------------|--|
| Target Name: | Homo sapiens CD2 molecule (CD2) |
| Alternative Name: | LFA-2; SRBC; T11 |
| Database Link: | NP_001758 |
| Function: | CD2 is a surface antigen of the human T-lymphocyte lineage that is expressed on all peripheral blood T cells (summarized by Sewell et al., 1986 [PubMed 3490670]). It is one of the earliest T-cell markers, being present on more than 95% of thymocytes; it is also found on some natural killer cells but not on B lymphocytes. Monoclonal antibodies directed against CD2 inhibit the formation of rosettes with sheep erythrocytes, indicating that CD2 is the erythrocyte receptor or is closely associated with it.[supplied by |

This product is to be used for laboratory only. Not for diagnostic or therapeutic use.

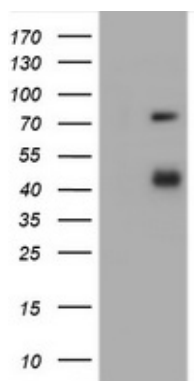
© 2014 OriGene Technologies, Inc. 9620 Medical Center Dr., Suite 200, Rockville, MD 20850

OMIM, Jul 2010].

This product is to be used for laboratory only. Not for diagnostic or therapeutic use.

© 2014 OriGene Technologies, Inc. 9620 Medical Center Dr., Suite 200, Rockville, MD 20850

Validation Data



HEK293T cells were transfected with the pCMV6-ENTRY control (Left lane) or pCMV6-ENTRY CD2 (RC206612, Right lane) cDNA for 48 hrs and lysed. Equivalent amounts of cell lysates (5 ug per lane) were separated by SDS-PAGE and immunoblotted with anti-CD2.

* More validation images may be available on our website: <http://www.origene.com/antibody/TA800674.aspx>

This product is to be used for laboratory only. Not for diagnostic or therapeutic use.

© 2014 OriGene Technologies, Inc. 9620 Medical Center Dr., Suite 200, Rockville, MD 20850
