

Name: HBS1L mouse monoclonal antibody, clone 1G7
Product Data Sheet - TRUEMAB**Catalog: TA800608**

Components:	<ul style="list-style-type: none">• HBS1L mouse monoclonal antibody, clone 1G7 (TA800608)• 1 vial of 20ug myc-DDK tagged HBS1L HEK293T over-expression lysate lyophilized in RIPA buffer (LC416509). (Reconstitute into 20ul of 1x SDS sample buffer before loading; load 5ul per lane as WB control or as desired)
Amount:	100ul
Immunogen:	Human recombinant protein fragment corresponding to amino acids 1-260 of human HBS1L (NP_006611) produced in E.coli.
Host:	Mouse
Isotype:	IgG1
Species Reactivity:	Human
Guaranteed Applications:	WB
Suggested Dilutions:	WB 1:2000,
Concentration:	1.00 mg/ml
Buffer:	PBS (PH 7.3) containing 1% BSA, 50% glycerol and 0.02% sodium azide.
Purification:	Purified from mouse ascites fluids by affinity chromatography
Storage Condition:	Shipped at -20C. Upon delivery store at -20C. Dilute in PBS (pH7.3) if necessary. Stable for 12 months from date of receipt. Avoid repeated freeze-thaws.

Target

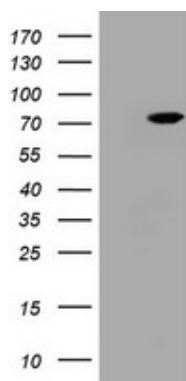
Target Name:	Homo sapiens HBS1-like translational GTPase (HBS1L), transcript variant 1
Alternative Name:	EF-1a; eRF3c; ERF5; HBS1; HSPC276
Database Link:	NP_006611
Function:	This gene encodes a member of the GTP-binding elongation factor family. It is expressed in multiple tissues with the highest expression in heart and skeletal muscle. The intergenic region of this gene and the MYB gene has been identified to be a quantitative trait locus (QTL) controlling fetal hemoglobin level, and this region influences erythrocyte, platelet, and monocyte counts as well as erythrocyte volume and

This product is to be used for laboratory only. Not for diagnostic or therapeutic use.

© 2014 OriGene Technologies, Inc. 9620 Medical Center Dr., Suite 200, Rockville, MD 20850

hemoglobin content. DNA polymorphisms at this region associate with fetal hemoglobin levels and pain crises in sickle cell disease. A single nucleotide polymorphism in exon 1 of this gene is significantly associated with severity in beta-thalassemia/Hemoglobin E. Multiple alternatively spliced transcript variants encoding different protein isoforms have been found for this gene. [provided by RefSeq].

Validation Data



HEK293T cells were transfected with the pCMV6-ENTRY control (Left lane) or pCMV6-ENTRY HBS1L (RC208125, Right lane) cDNA for 48 hrs and lysed. Equivalent amounts of cell lysates (5 ug per lane) were separated by SDS-PAGE and immunoblotted with anti-HBS1L.

* More validation images may be available on our website: <http://www.origene.com/antibody/TA800608.aspx>

This product is to be used for laboratory only. Not for diagnostic or therapeutic use.

© 2014 OriGene Technologies, Inc. 9620 Medical Center Dr., Suite 200, Rockville, MD 20850
