

Name: JUN (c-Jun) mouse monoclonal antibody, Clone 7H5
Product Data Sheet - TRUEMAB**Catalog: TA800586**

Components:	<ul style="list-style-type: none">• JUN (c-Jun) mouse monoclonal antibody, Clone 7H5 (TA800586)• 1 vial of 20ug myc-DDK tagged JUN HEK293T over-expression lysate lyophilized in RIPA buffer (LC400825). (Reconstitute into 20ul of 1x SDS sample buffer before loading; load 5ul per lane as WB control or as desired)
Amount:	100ul
Immunogen:	Full length human recombinant protein of human JUN (NP_002219) produced in E.coli.
Host:	Mouse
Isotype:	IgG1
Species Reactivity:	Human
Guaranteed Applications:	WB
Suggested Dilutions:	WB 1:2000,
Concentration:	1.00 mg/ml
Buffer:	PBS (PH 7.3) containing 1% BSA, 50% glycerol and 0.02% sodium azide.
Purification:	Purified from mouse ascites fluids by affinity chromatography
Storage Condition:	Shipped at -20C. Upon delivery store at -20C. Dilute in PBS (pH7.3) if necessary. Stable for 12 months from date of receipt. Avoid repeated freeze-thaws.

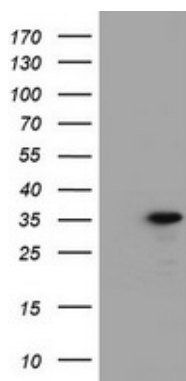
Target

Target Name:	Homo sapiens jun proto-oncogene (JUN)
Alternative Name:	AP-1; AP1; c-Jun
Database Link:	NP_002219
Function:	This gene is the putative transforming gene of avian sarcoma virus 17. It encodes a protein which is highly similar to the viral protein, and which interacts directly with specific target DNA sequences to regulate gene expression. This gene is intronless and is mapped to 1p32-p31, a chromosomal region involved in both translocations and deletions in human malignancies. [provided by RefSeq].

This product is to be used for laboratory only. Not for diagnostic or therapeutic use.

© 2014 OriGene Technologies, Inc. 9620 Medical Center Dr., Suite 200, Rockville, MD 20850

Validation Data



HEK293T cells were transfected with the pCMV6-ENTRY control (Left lane) or pCMV6-ENTRY JUN (RC209804, Right lane) cDNA for 48 hrs and lysed. Equivalent amounts of cell lysates (5 ug per lane) were separated by SDS-PAGE and immunoblotted with anti-JUN.

* More validation images may be available on our website: <http://www.origene.com/antibody/TA800586.aspx>

This product is to be used for laboratory only. Not for diagnostic or therapeutic use.

© 2014 OriGene Technologies, Inc. 9620 Medical Center Dr., Suite 200, Rockville, MD 20850
