

Name: HSD17B8 mouse monoclonal antibody, clone 6H2
Product Data Sheet - TRUEMAB**Catalog: TA800574**

Components:	<ul style="list-style-type: none">• HSD17B8 mouse monoclonal antibody, clone 6H2 (TA800574)• 1 vial of 20ug myc-DDK tagged HSD17B8 HEK293T over-expression lysate lyophilized in RIPA buffer (LC415425). (Reconstitute into 20ul of 1x SDS sample buffer before loading; load 5ul per lane as WB control or as desired)
Amount:	100ul
Immunogen:	Human recombinant protein fragment corresponding to amino acids 57-261 of human HSD17B8 (NP_055049) produced in E.coli.
Host:	Mouse
Isotype:	IgG1
Species Reactivity:	Human , Dog
Guaranteed Applications:	WB, IHC
Suggested Dilutions:	WB 1:2000, IHC 1:150,
Concentration:	1.00 mg/ml
Buffer:	PBS (PH 7.3) containing 1% BSA, 50% glycerol and 0.02% sodium azide.
Purification:	Purified from mouse ascites fluids by affinity chromatography
Storage Condition:	Shipped at -20C. Upon delivery store at -20C. Dilute in PBS (pH7.3) if necessary. Stable for 12 months from date of receipt. Avoid repeated freeze-thaws.

Target

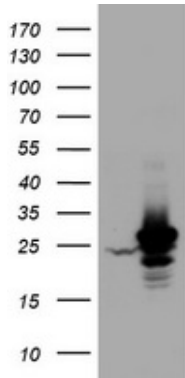
Target Name:	Homo sapiens hydroxysteroid (17-beta) dehydrogenase 8 (HSD17B8)
Alternative Name:	D6S2245E; dJ1033B10.9; FABG; FABGL; H2-KE6; HKE6; KE6; RING2; SDR30C1
Database Link:	NP_055049
Function:	In mice, the Ke6 protein is a 17-beta-hydroxysteroid dehydrogenase that can regulate the concentration of biologically active estrogens and androgens. It is preferentially an oxidative enzyme and inactivates estradiol, testosterone, and dihydrotestosterone. However, the enzyme has some reductive activity and can synthesize estradiol from estrone. The protein encoded by this gene is similar to Ke6 and is a

This product is to be used for laboratory only. Not for diagnostic or therapeutic use.

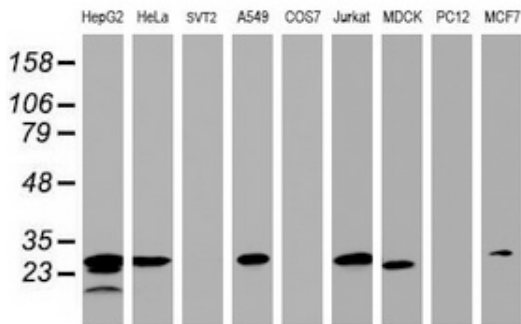
© 2014 OriGene Technologies, Inc. 9620 Medical Center Dr., Suite 200, Rockville, MD 20850

member of the short-chain dehydrogenase superfamily. An alternatively spliced transcript of this gene has been detected, but the full-length nature of this variant has not been determined. [provided by RefSeq, Jul 2008].

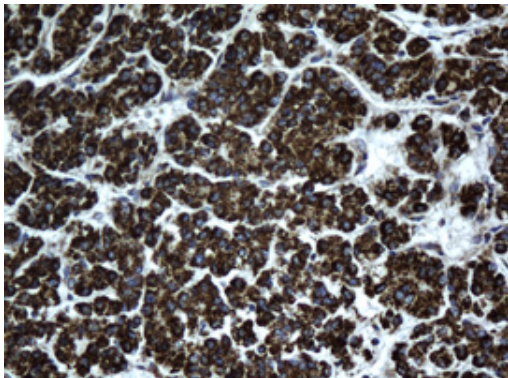
Validation Data



HEK293T cells were transfected with the pCMV6-ENTRY control (Left lane) or pCMV6-ENTRY HSD17B8 (RC203806, Right lane) cDNA for 48 hrs and lysed. Equivalent amounts of cell lysates (5 ug per lane) were separated by SDS-PAGE and immunoblotted with anti-HSD17B8.



Western blot analysis of extracts (35ug) from 9 different cell lines by using anti-HSD17B8 monoclonal antibody (HepG2: human; HeLa: human; SVT2: mouse; A549: human; COS7: monkey; Jurkat: human; MDCK: canine; PC12: rat; MCF7: human).



Immunohistochemical staining of paraffin-embedded Carcinoma of Human liver tissue using anti-HSD17B8 mouse monoclonal antibody. (Heat-induced epitope retrieval by Tris-EDTA, pH8.0, TA800574)

* More validation images may be available on our website: <http://www.origene.com/antibody/TA800574.aspx>