

Name: Rabbit polyclonal MKP1 (Ser359) antibody(Phospho-specific)
Product Data Sheet - PHOSPHO**Catalog: TA313772**

Components:	• Rabbit polyclonal MKP1 (Ser359) antibody(Phospho-specific) (TA313772)
Amount:	100ul
Immunogen:	The antiserum was produced against synthesized phosphopeptide derived from human MKP1 around the phosphorylation site of serine 359 (L-Q-SP-P-I).
Host:	Rabbit
Isotype:	IgG
Species Reactivity:	Human, Mouse
Guaranteed Applications:	IHC
Suggested Dilutions:	IHC: 1:50~1:100, ELISA: 1:10000
Concentration:	1mg/ml
Buffer:	Phosphate buffered saline (without Mg ²⁺ and Ca ²⁺), pH 7.4, 150mM NaCl, 0.02% sodium azide and 50% glycerol.
Purification:	The antibody was affinity-purified from rabbit antiserum by affinity-chromatography using epitope-specific immunogen.
Storage Condition:	Shipped at -20C. Upon delivery store at -20C. Dilute in PBS (pH7.3) if necessary. Stable for 12 months from date of receipt. Avoid repeated freeze-thaws.

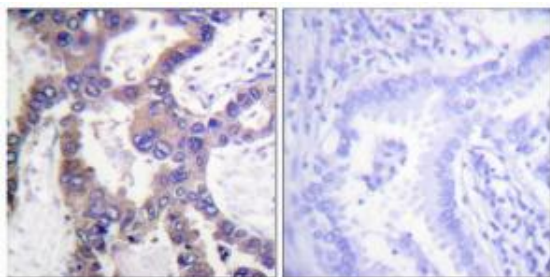
Target

Target Name:	Homo sapiens dual specificity phosphatase 1 (DUSP1)
Alternative Name:	CL100; HVH1; MKP-1; MKP1; PTPN10
Database Link:	NP_004408
Function:	

This product is to be used for laboratory only. Not for diagnostic or therapeutic use.

© 2014 OriGene Technologies, Inc. 9620 Medical Center Dr., Suite 200, Rockville, MD 20850

Validation Data



Immunohistochemistry analysis of paraffin-embedded human lung carcinoma tissue using MKP1 (Phospho-Ser359) antibody. The picture on the right is treated with the synthesized peptide.

* More validation images may be available on our website: <http://www.origene.com/antibody/TA313772.aspx>

This product is to be used for laboratory only. Not for diagnostic or therapeutic use.

© 2014 OriGene Technologies, Inc. 9620 Medical Center Dr., Suite 200, Rockville, MD 20850
