

Name: Rabbit polyclonal anti-DNMT3B antibody
Product Data Sheet - ANTIBODY**Catalog: TA313761**

| | |
|---------------------------------|---|
| Components: | • Rabbit polyclonal anti-DNMT3B antibody (TA313761) |
| Amount: | 100ul |
| Immunogen: | The antiserum was produced against synthesized peptide derived from N-terminal of human DNMT3B. |
| Host: | Rabbit |
| Isotype: | IgG |
| Species Reactivity: | Human |
| Guaranteed Applications: | WB, IHC, IF |
| Suggested Dilutions: | WB: 1:500~1:3000, IHC: 1:50~1:100, IF: 1:100~1:500, ELISA: 1:20000 |
| Concentration: | 1mg/ml |
| Buffer: | Phosphate buffered saline (without Mg ²⁺ and Ca ²⁺), pH 7.4, 150mM NaCl, 0.02% sodium azide and 50% glycerol. |
| Purification: | The antibody was affinity-purified from rabbit antiserum by affinity-chromatography using epitope-specific immunogen. |
| Storage Condition: | Shipped at -20C. Upon delivery store at -20C. Dilute in PBS (pH7.3) if necessary. Stable for 12 months from date of receipt. Avoid repeated freeze-thaws. |

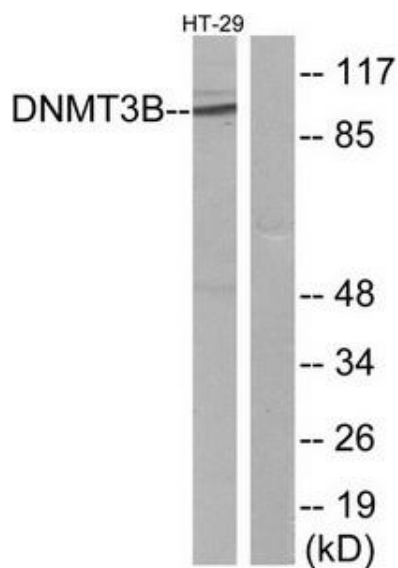
Target

| | |
|--------------------------|--|
| Target Name: | Homo sapiens DNA (cytosine-5-)-methyltransferase 3 beta (DNMT3B), transcript variant 6 |
| Alternative Name: | ICF; ICF1; M.HsaIIIB |
| Database Link: | NP_787046 |
| Function: | |

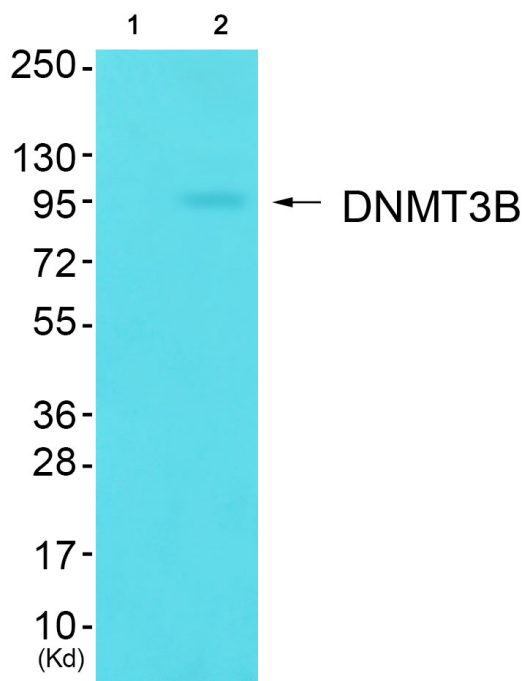
This product is to be used for laboratory only. Not for diagnostic or therapeutic use.

© 2014 OriGene Technologies, Inc. 9620 Medical Center Dr., Suite 200, Rockville, MD 20850

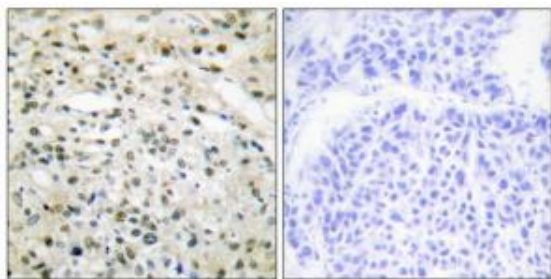
Validation Data



Western blot analysis of extracts from HT-29 cells, using DNMT3B antibody. The lane on the right is treated with the synthesized peptide.

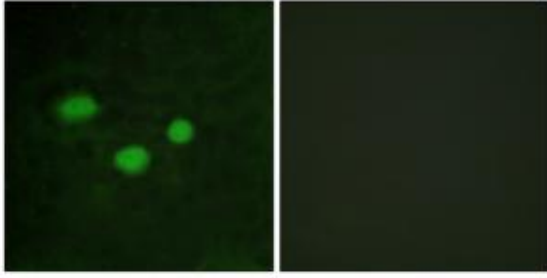


Western blot analysis of extracts from HuvEc cells (Lane 2), using DNMT3B Antibody. The lane on the left is treated with synthesized peptide.



Immunohistochemistry analysis of paraffin-embedded human liver carcinoma tissue using DNMT3B antibody. The picture on the right is treated with the synthesized peptide.

Immunofluorescence analysis of HeLa cells, using DNMT3B antibody. The picture on the right is treated with the synthesized



peptide.

* More validation images may be available on our website: <http://www.origene.com/antibody/TA313761.aspx>

This product is to be used for laboratory only. Not for diagnostic or therapeutic use.

© 2014 OriGene Technologies, Inc. 9620 Medical Center Dr., Suite 200, Rockville, MD 20850
