

**Name: Rabbit polyclonal Cytochrome P450 2A13 antibody**  
**Product Data Sheet - ANTIBODY****Catalog: TA313721**

<b>Components:</b>	• Rabbit polyclonal Cytochrome P450 2A13 antibody (TA313721)
<b>Amount:</b>	100ul
<b>Immunogen:</b>	The antiserum was produced against synthesized peptide derived from internal of human Cytochrome P450 2A13.
<b>Host:</b>	Rabbit
<b>Isotype:</b>	IgG
<b>Species Reactivity:</b>	Human
<b>Guaranteed Applications:</b>	WB
<b>Suggested Dilutions:</b>	WB: 1:500~1:3000, ELISA: 1:20000
<b>Concentration:</b>	1mg/ml
<b>Buffer:</b>	Phosphate buffered saline (without Mg <sup>2+</sup> and Ca <sup>2+</sup> ), pH 7.4, 150mM NaCl, 0.02% sodium azide and 50% glycerol.
<b>Purification:</b>	The antibody was affinity-purified from rabbit antiserum by affinity-chromatography using epitope-specific immunogen.
<b>Storage Condition:</b>	Shipped at -20C. Upon delivery store at -20C. Dilute in PBS (pH7.3) if necessary. Stable for 12 months from date of receipt. Avoid repeated freeze-thaws.

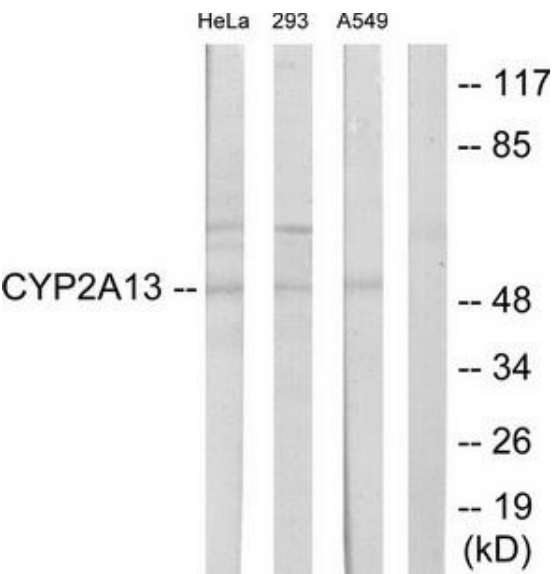
## Target

<b>Target Name:</b>	Homo sapiens cytochrome P450, family 2, subfamily A, polypeptide 13 (CYP2A13)
<b>Alternative Name:</b>	CPAD; CYP2A; CYP11A13
<b>Database Link:</b>	NP_000757
<b>Function:</b>	

***This product is to be used for laboratory only. Not for diagnostic or therapeutic use.***

© 2014 OriGene Technologies, Inc. 9620 Medical Center Dr., Suite 200, Rockville, MD 20850

Validation Data



Western blot analysis of extracts from HeLa cells, 293 cells and A549 cells, using Cytochrome P450 2A13 antibody. The lane on the right is treated with the synthesized peptide.

\* More validation images may be available on our website: <http://www.origene.com/antibody/TA313721.aspx>