

**Name: Rabbit polyclonal CATL2 (Cleaved-Leu114) antibody**  
**Product Data Sheet - ANTIBODY****Catalog: TA313712**

<b>Components:</b>	<ul style="list-style-type: none"><li>• Rabbit polyclonal CATL2 (Cleaved-Leu114) antibody (TA313712)</li><li>• 1 vial of 20ug myc-DDK tagged CTSL2 HEK293T over-expression lysate lyophilized in RIPA buffer (LC420007). (Reconstitute into 20ul of 1x SDS sample buffer before loading; load 5ul per lane as WB control or as desired)</li></ul>
<b>Amount:</b>	100ul
<b>Immunogen:</b>	The antiserum was produced against synthesized peptide derived from human CATL2.
<b>Host:</b>	Rabbit
<b>Isotype:</b>	IgG
<b>Species Reactivity:</b>	Human
<b>Guaranteed Applications:</b>	WB
<b>Suggested Dilutions:</b>	WB: 1:500~1:3000, ELISA: 1:20000
<b>Concentration:</b>	1mg/ml
<b>Buffer:</b>	Phosphate buffered saline (without Mg <sup>2+</sup> and Ca <sup>2+</sup> ), pH 7.4, 150mM NaCl, 0.02% sodium azide and 50% glycerol.
<b>Purification:</b>	The antibody was affinity-purified from rabbit antiserum by affinity-chromatography using epitope-specific immunogen.
<b>Storage Condition:</b>	Shipped at -20C. Upon delivery store at -20C. Dilute in PBS (pH7.3) if necessary. Stable for 12 months from date of receipt. Avoid repeated freeze-thaws.

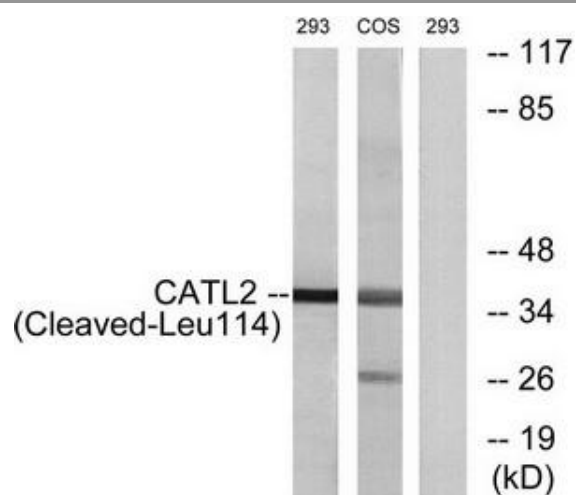
## Target

<b>Target Name:</b>	Homo sapiens cathepsin V (CTSV), transcript variant 1
<b>Alternative Name:</b>	CATL2; CTSL2; CTSU
<b>Database Link:</b>	NP_001324
<b>Function:</b>	

***This product is to be used for laboratory only. Not for diagnostic or therapeutic use.***

© 2014 OriGene Technologies, Inc. 9620 Medical Center Dr., Suite 200, Rockville, MD 20850

## Validation Data



Western blot analysis of extracts from 293 cells and COS-7 cells treated with etoposide (25uM, 1 hour), using CATL2 (Cleaved-Leu114) antibody. The lane on the right is treated with the synthesized peptide.

\* More validation images may be available on our website: <http://www.origene.com/antibody/TA313712.aspx>

***This product is to be used for laboratory only. Not for diagnostic or therapeutic use.***

© 2014 OriGene Technologies, Inc. 9620 Medical Center Dr., Suite 200, Rockville, MD 20850