

Name: Goat Polyclonal Antibody against LDLRAP1
Product Data Sheet - ANTIBODY**Catalog: TA302878**

Components:	<ul style="list-style-type: none">Goat Polyclonal Antibody against LDLRAP1 (TA302878)1 vial of 20ug myc-DDK tagged LDLRAP1 HEK293T over-expression lysate lyophilized in RIPA buffer (LC414462). (Reconstitute into 20ul of 1x SDS sample buffer before loading; load 5ul per lane as WB control or as desired)
Amount:	100ug
Immunogen:	Peptide with sequence DALKSAGRALIRS-C, from the N Terminus of the protein sequence according to NP_056442.1.
Host:	Goat
Isotype:	Goat IgG
Species Reactivity:	Human
Guaranteed Applications:	WB
Suggested Dilutions:	ELISA: 1:16,000. WB: 1-3µg/ml.
Concentration:	0.5 mg/ml
Buffer:	Supplied at 0.5 mg/ml in Tris saline, 0.02% sodium azide, pH7.3 with 0.5% bovine serum albumin.
Purification:	Purified from goat serum by ammonium sulphate precipitation followed by antigen affinity chromatography using the immunizing peptide. Supplied at 0.5 mg/ml in Tris saline, 0.02% sodium azide, pH7.3 with 0.5% bovine serum albumin. Aliquot and store at -20°C. Minimize freezing and thawing.
Storage Condition:	Shipped at -20C. Upon delivery store at -20C. Dilute in PBS (pH7.3) if necessary. Stable for 12 months from date of receipt. Avoid repeated freeze-thaws.

Target

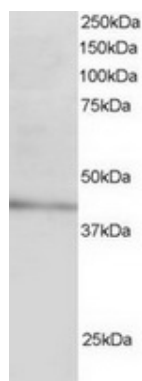
Target Name:	Homo sapiens low density lipoprotein receptor adaptor protein 1 (LDLRAP1)
Alternative Name:	ARH; ARH1; ARH2; FHCB1; FHCB2
Database Link:	NP_056442
Function:	The protein encoded by this gene is a cytosolic protein which contains a phosphotyrosine binding (PTD)

This product is to be used for laboratory only. Not for diagnostic or therapeutic use.

© 2014 OriGene Technologies, Inc. 9620 Medical Center Dr., Suite 200, Rockville, MD 20850

domain. The PTD domain has been found to interact with the cytoplasmic tail of the LDL receptor. Mutations in this gene lead to LDL receptor malfunction and cause the disorder autosomal recessive hypercholesterolaemia. [provided by RefSeq].

Validation Data



TA302878 staining (3 μ g/ml) of Human Liver lysate (RIPA buffer, 30 μ g total protein per lane). Primary incubated for 1 hour. Detected by western blot using chemiluminescence.

* More validation images may be available on our website: <http://www.origene.com/antibody/TA302878.aspx>

This product is to be used for laboratory only. Not for diagnostic or therapeutic use.

© 2014 OriGene Technologies, Inc. 9620 Medical Center Dr., Suite 200, Rockville, MD 20850
