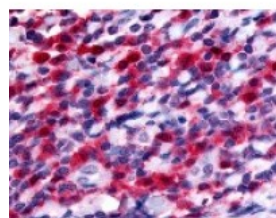




FLT3 Antibody

CATALOG NUMBER: 48-319



Immunohistochemistry staining of FLT3 in interfollicular zone tissue using FLT3 Antibody.

Specifications

SPECIES REACTIVITY:	Gibbon, Gorilla, Human
TESTED APPLICATIONS:	ELISA, IHC
APPLICATIONS:	FLT3 antibody can be used in immunohistochemistry starting at 13 - 26 ug/mL.
USER NOTE:	Optimal dilutions for each application to be determined by the researcher.
SPECIFICITY:	BLAST analysis of the peptide immunogen showed no homology with other human proteins.
IMMUNOGEN:	FLT3 antibody was raised against a peptide located near the internal domain of FLT3 (Human).
HOST SPECIES:	Rabbit

Properties

PURIFICATION:	Immunoaffinity Chromatography
PHYSICAL STATE:	Liquid
BUFFER:	PBS, 0.1% sodium azide.
STORAGE CONDITIONS:	FLT3 antibody should be stored long term (months) at -80 °C and short term (days) at 4 °C. As with all antibodies avoid freeze/thaw cycles.
CLONALITY:	Polyclonal
CONJUGATE:	Unconjugated

Additional Info

ALTERNATE NAMES:	FLT3, CD135, CD135 antigen, Fetal liver kinase 2, Fetal liver kinase-2, FL cytokine receptor, FLK2, FLT-3, Fms-like tyrosine kinase 3, Stem cell tyrosine kinase 1, STK-1, FLK-2, Fms-related tyrosine kinase 3, STK1
ACCESSION NO.:	P36888
PROTEIN GI NO.:	156630887
OFFICIAL SYMBOL:	FLT3
GENE ID:	2322

Background

BACKGROUND:

FLT3, a PDGF Receptor-type protein kinase, promotes the differentiation and proliferation of hematopoietic cells by binding to hematopoietic growth factor. Mutations of the FLT3 gene have been implicated in acute myeloid leukemia.

FOR RESEARCH USE ONLY

December 13, 2016