

Name:CD2 mouse monoclonal antibody,clone 1C5
Product Data Sheet - TRUEMAB**Catalog: TA800655**

Components:	<ul style="list-style-type: none">• CD2 mouse monoclonal antibody,clone 1C5 (TA800655)• 1 vial of 20ug myc-DDK tagged CD2 HEK293T over-expression lysate lyophilized in RIPA buffer (LC400671). (Reconstitute into 20ul of 1x SDS sample buffer before loading; load 5ul per lane as WB control or as desired)
Amount:	100ul
Immunogen:	Full length human recombinant protein of human CD2 (NP_001758) produced in HEK293T cell.
Host:	Mouse
Isotype:	IgG1
Species Reactivity:	Human , Dog , Rat , Mouse
Guaranteed Applications:	WB, IHC
Suggested Dilutions:	WB 1:2000~4000, IHC 1:500,
Concentration:	1.00 mg/ml
Buffer:	PBS (PH 7.3) containing 1% BSA, 50% glycerol and 0.02% sodium azide.
Purification:	Purified from mouse ascites fluids by affinity chromatography
Storage Condition:	Shipped at -20C. Upon delivery store at -20C. Dilute in PBS (pH7.3) if necessary. Stable for 12 months from date of receipt. Avoid repeated freeze-thaws.

Target

Target Name:	Homo sapiens CD2 molecule (CD2)
Alternative Name:	LFA-2; SRBC; T11
Database Link:	NP_001758
Function:	CD2 is a surface antigen of the human T-lymphocyte lineage that is expressed on all peripheral blood T cells (summarized by Sewell et al., 1986 [PubMed 3490670]). It is one of the earliest T-cell markers, being present on more than 95% of thymocytes; it is also found on some natural killer cells but not on B lymphocytes. Monoclonal antibodies directed against CD2 inhibit the formation of rosettes with sheep erythrocytes, indicating that CD2 is the erythrocyte receptor or is closely associated with it.[supplied by

This product is to be used for laboratory only. Not for diagnostic or therapeutic use.

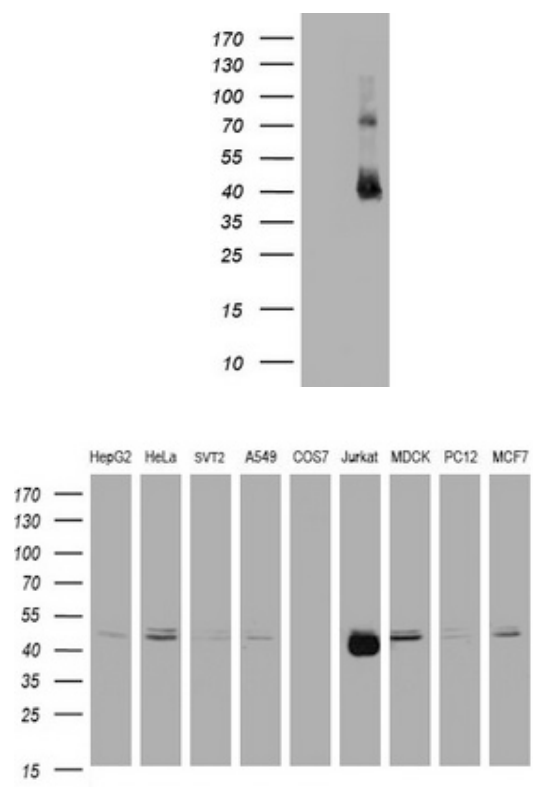
© 2014 OriGene Technologies, Inc. 9620 Medical Center Dr., Suite 200, Rockville, MD 20850

OMIM, Jul 2010].

This product is to be used for laboratory only. Not for diagnostic or therapeutic use.

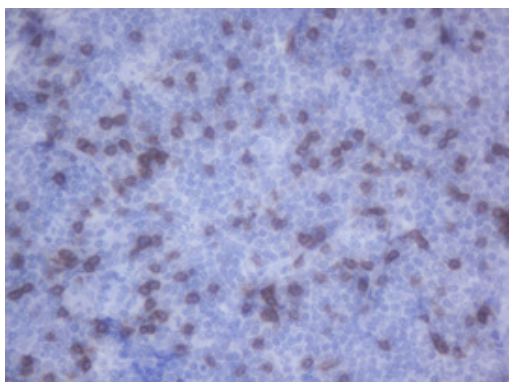
© 2014 OriGene Technologies, Inc. 9620 Medical Center Dr., Suite 200, Rockville, MD 20850

Validation Data

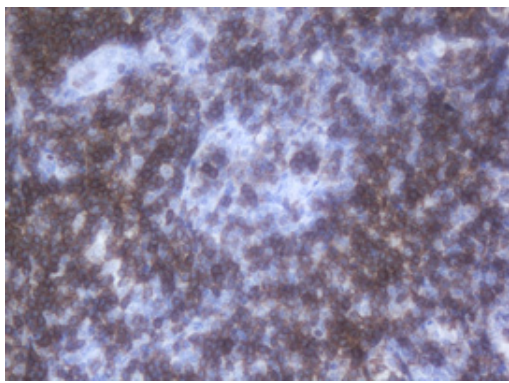


HEK293T cells were transfected with the pCMV6-ENTRY control (Left lane) or pCMV6-ENTRY CD2 (RC206612, Right lane) cDNA for 48 hrs and lysed. Equivalent amounts of cell lysates (5 ug per lane) were separated by SDS-PAGE and immunoblotted with anti-CD2.

Western blot analysis of extracts (35ug) from 9 different cell lines by using anti-CD2 monoclonal antibody (HepG2: human; HeLa: human; SVT2: mouse; A549: human; COS7: monkey; Jurkat: human; MDCK: canine; PC12: rat; MCF7: human).



Immunohistochemical staining of paraffin-embedded Human lymphoma tissue using anti-CD2 mouse monoclonal antibody. (Heat-induced epitope retrieval by Tris-EDTA, pH8.0, TA800655)



Immunohistochemical staining of paraffin-embedded Human tonsil using anti-CD2 mouse monoclonal antibody. (Heat-induced epitope retrieval by Tris-EDTA, pH8.0, TA800655)

* More validation images may be available on our website: <http://www.origene.com/antibody/TA800655.aspx>