

**Name: ING2 mouse monoclonal antibody, clone 1E12**  
**Product Data Sheet - TRUEMAB****Catalog: TA800642**

<b>Components:</b>	<ul style="list-style-type: none"><li>• ING2 mouse monoclonal antibody, clone 1E12 (TA800642)</li><li>• 1 vial of 20ug myc-DDK tagged ING2 HEK293T over-expression lysate lyophilized in RIPA buffer (LC419856). (Reconstitute into 20ul of 1x SDS sample buffer before loading; load 5ul per lane as WB control or as desired)</li></ul>
<b>Amount:</b>	100ul
<b>Immunogen:</b>	Full length human recombinant protein of human ING2 (NP_001555) produced in E.coli.
<b>Host:</b>	Mouse
<b>Isotype:</b>	IgG1
<b>Species Reactivity:</b>	Human
<b>Guaranteed Applications:</b>	WB
<b>Suggested Dilutions:</b>	WB 1:500~2000,
<b>Concentration:</b>	1mg/ml
<b>Buffer:</b>	PBS (PH 7.3) containing 1% BSA, 50% glycerol and 0.02% sodium azide.
<b>Purification:</b>	Purified from mouse ascites fluids by affinity chromatography
<b>Storage Condition:</b>	Shipped at -20C. Upon delivery store at -20C. Dilute in PBS (pH7.3) if necessary. Stable for 12 months from date of receipt. Avoid repeated freeze-thaws.

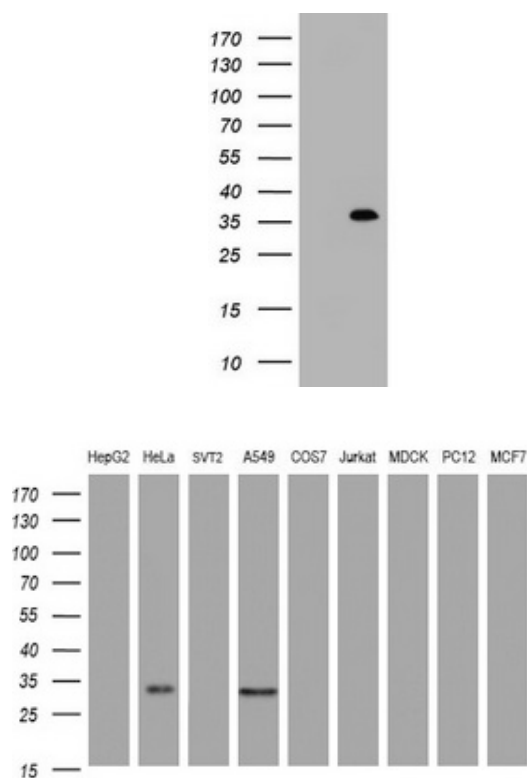
## Target

<b>Target Name:</b>	Homo sapiens inhibitor of growth family, member 2 (ING2), transcript variant 1
<b>Alternative Name:</b>	ING1L; p33ING2
<b>Database Link:</b>	NP_001555
<b>Function:</b>	This gene is a member of the inhibitor of growth (ING) family. Members of the ING family associate with and modulate the activity of histone acetyltransferase (HAT) and histone deacetylase (HDAC) complexes and function in DNA repair and apoptosis. [provided by RefSeq, Jul 2008].

***This product is to be used for laboratory only. Not for diagnostic or therapeutic use.***

© 2014 OriGene Technologies, Inc. 9620 Medical Center Dr., Suite 200, Rockville, MD 20850

## Validation Data



HEK293T cells were transfected with the pCMV6-ENTRY control (Left lane) or pCMV6-ENTRY ING2 (RC202478, Right lane) cDNA for 48 hrs and lysed. Equivalent amounts of cell lysates (5 ug per lane) were separated by SDS-PAGE and immunoblotted with anti-ING2.

Western blot analysis of extracts (35ug) from 9 different cell lines by using anti-ING2 monoclonal antibody (HepG2: human; HeLa: human; SVT2: mouse; A549: human; COS7: monkey; Jurkat: human; MDCK: canine; PC12: rat; MCF7: human).

\* More validation images may be available on our website: <http://www.origene.com/antibody/TA800642.aspx>

***This product is to be used for laboratory only. Not for diagnostic or therapeutic use.***

© 2014 OriGene Technologies, Inc. 9620 Medical Center Dr., Suite 200, Rockville, MD 20850