

Name: Rabbit polyclonal CRMP-2 (Ser522) antibody(Phospho-specific)**Catalog:** TA313766**Product Data Sheet - PHOSPHO**

Components:	• Rabbit polyclonal CRMP-2 (Ser522) antibody(Phospho-specific) (TA313766)
Amount:	100ul
Immunogen:	The antiserum was produced against synthesized phosphopeptide derived from human DPYSL2 around the phosphorylation site of serine 522.
Host:	Rabbit
Isotype:	IgG
Species Reactivity:	Human, Mouse, Rat
Guaranteed Applications:	WB
Suggested Dilutions:	WB: 1:500~1:3000, ELISA: 1:10000
Concentration:	1 mg/ml
Buffer:	Phosphate buffered saline (without Mg ²⁺ and Ca ²⁺), pH 7.4, 150mM NaCl, 0.02% sodium azide and 50% glycerol.
Purification:	The antibody was affinity-purified from rabbit antiserum by affinity-chromatography using epitope-specific immunogen.
Storage Condition:	Shipped at -20C. Upon delivery store at -20C. Dilute in PBS (pH7.3) if necessary. Stable for 12 months from date of receipt. Avoid repeated freeze-thaws.

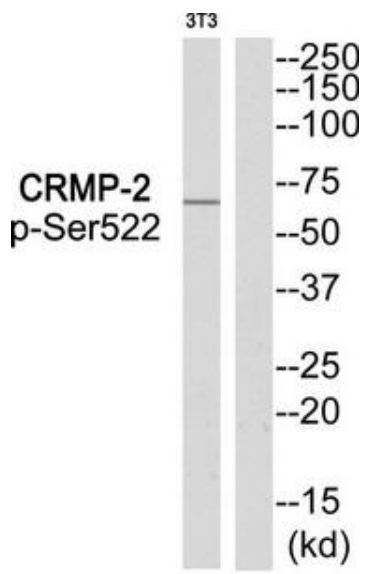
Target

Target Name:	Homo sapiens dihydropyrimidinase-like 2 (DPYSL2), transcript variant 2
Alternative Name:	CRMP-2; CRMP2; DHPRP2; DRP-2; DRP2; N2A3; ULIP-2; ULIP2
Database Link:	NP_001377
Function:	

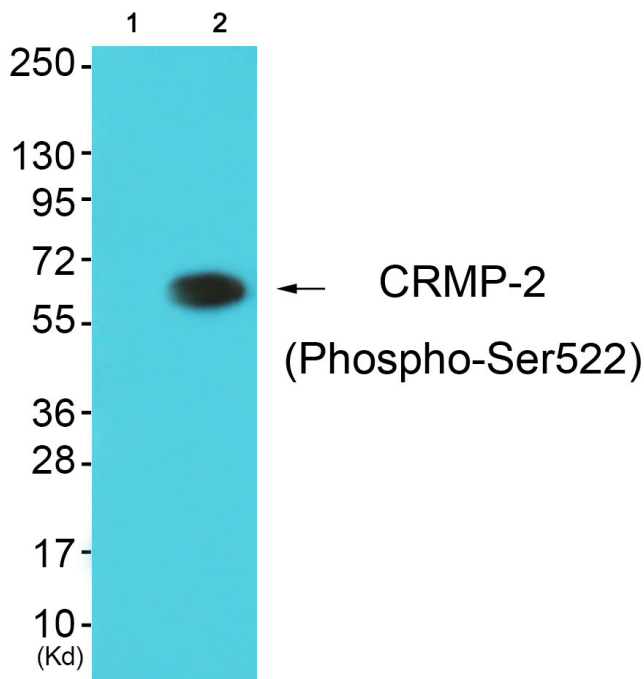
This product is to be used for laboratory only. Not for diagnostic or therapeutic use.

© 2014 OriGene Technologies, Inc. 9620 Medical Center Dr., Suite 200, Rockville, MD 20850

Validation Data



Western blot analysis of extracts from 3T3 cells, using CRMP-2 (Phospho-Ser522) antibody. The lane on the right is treated with the synthesized peptide.



Western blot analysis of extracts from HuvEc cells (Lane 2), using CRMP-2 (Phospho-Ser522) Antibody. The lane on the left is treated with synthesized peptide.

* More validation images may be available on our website: <http://www.origene.com/antibody/TA313766.aspx>