

Name: Goat Polyclonal Antibody against PES1
Product Data Sheet - ANTIBODY**Catalog: TA302872**

Components:	• Goat Polyclonal Antibody against PES1 (TA302872)
Amount:	100ug
Immunogen:	Peptide with sequence GGLEKKKYERGSA-C, from the N Terminus of the protein sequence according to NP_055118.
Host:	Goat
Isotype:	Goat IgG
Species Reactivity:	Human
Guaranteed Applications:	WB
Suggested Dilutions:	ELISA: 1:32,000. WB: 1-3µg/ml.
Concentration:	0.5 mg/ml
Buffer:	Supplied at 0.5 mg/ml in Tris saline, 0.02% sodium azide, pH7.3 with 0.5% bovine serum albumin.
Purification:	Purified from goat serum by ammonium sulphate precipitation followed by antigen affinity chromatography using the immunizing peptide. Supplied at 0.5 mg/ml in Tris saline, 0.02% sodium azide, pH7.3 with 0.5% bovine serum albumin. Aliquot and store at -20°C. Minimize freezing and thawing.
Storage Condition:	Shipped at -20C. Upon delivery store at -20C. Dilute in PBS (pH7.3) if necessary. Stable for 12 months from date of receipt. Avoid repeated freeze-thaws.

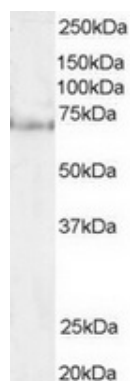
Target

Target Name:	Homo sapiens pescadillo ribosomal biogenesis factor 1 (PES1), transcript variant 1
Alternative Name:	PES
Database Link:	NP_055118
Function:	This gene encodes a protein that is abnormally elevated in malignant tumors of astrocytic origin. It is a strongly conserved gene containing a BRCT domain that is essential for the activity of this gene product. The gene plays a crucial role in cell proliferation and may be necessary for oncogenic transformation and tumor progression. [provided by RefSeq].

This product is to be used for laboratory only. Not for diagnostic or therapeutic use.

© 2014 OriGene Technologies, Inc. 9620 Medical Center Dr., Suite 200, Rockville, MD 20850

Validation Data



TA302872 (1µg/ml) staining of Hela lysate (35µg protein in RIPA buffer). Primary incubation was 1 hour. Detected by chemiluminescence.

* More validation images may be available on our website: <http://www.origene.com/antibody/TA302872.aspx>

This product is to be used for laboratory only. Not for diagnostic or therapeutic use.

© 2014 OriGene Technologies, Inc. 9620 Medical Center Dr., Suite 200, Rockville, MD 20850
